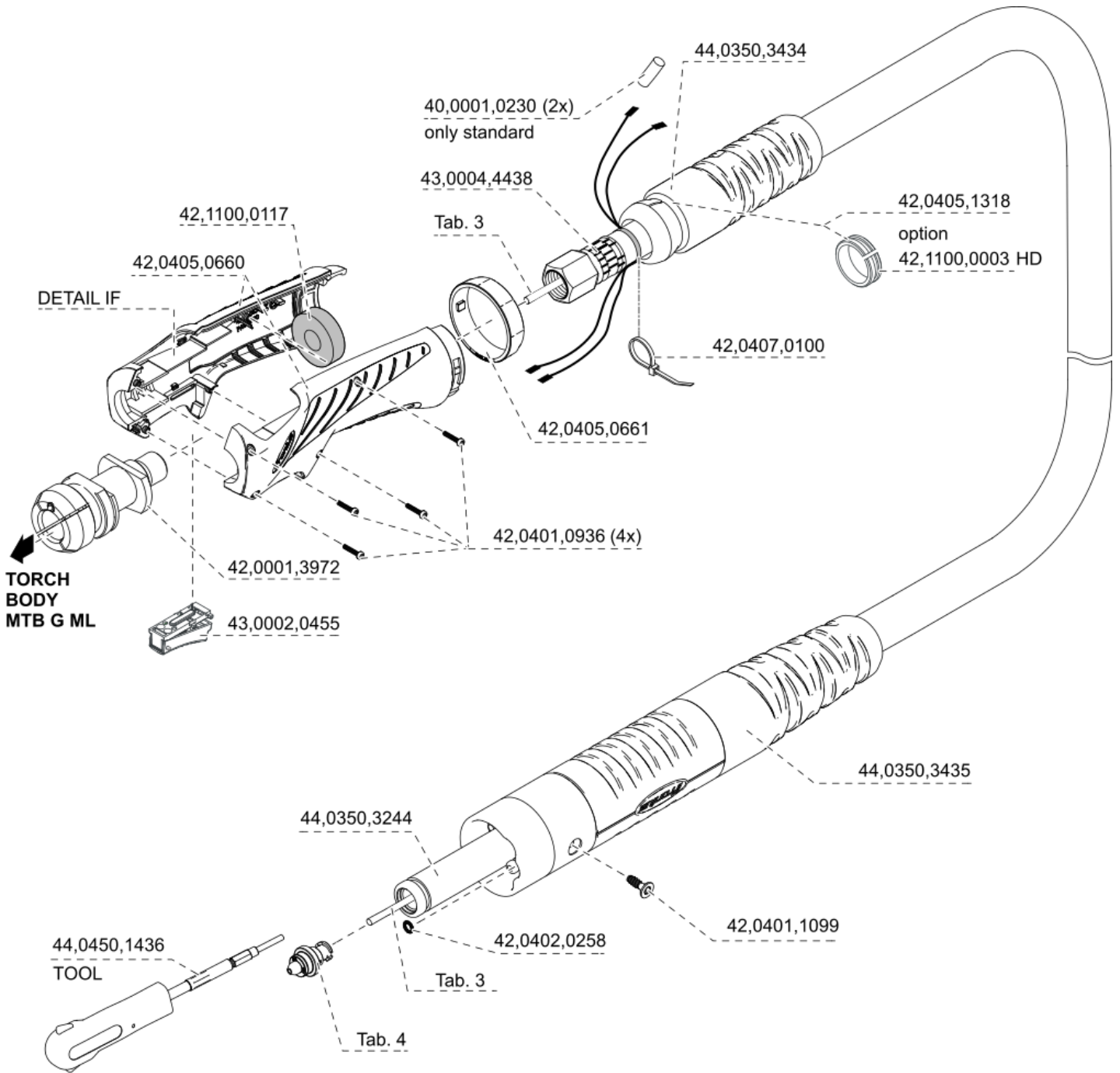


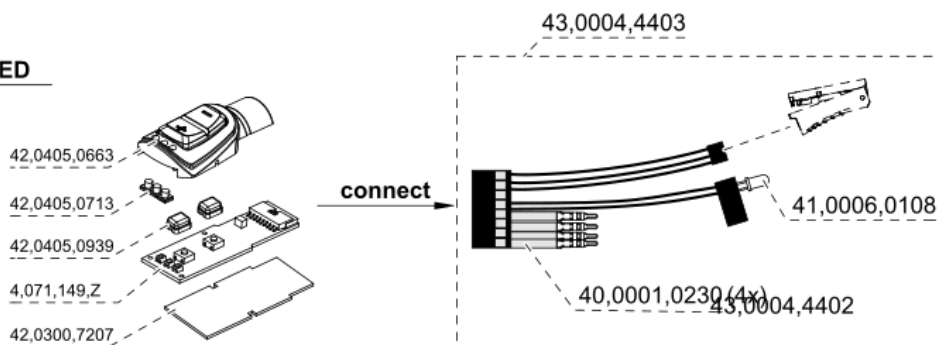
MHP 400i  
ML/G/FSC/UD/4.35m/LED

4,047,779



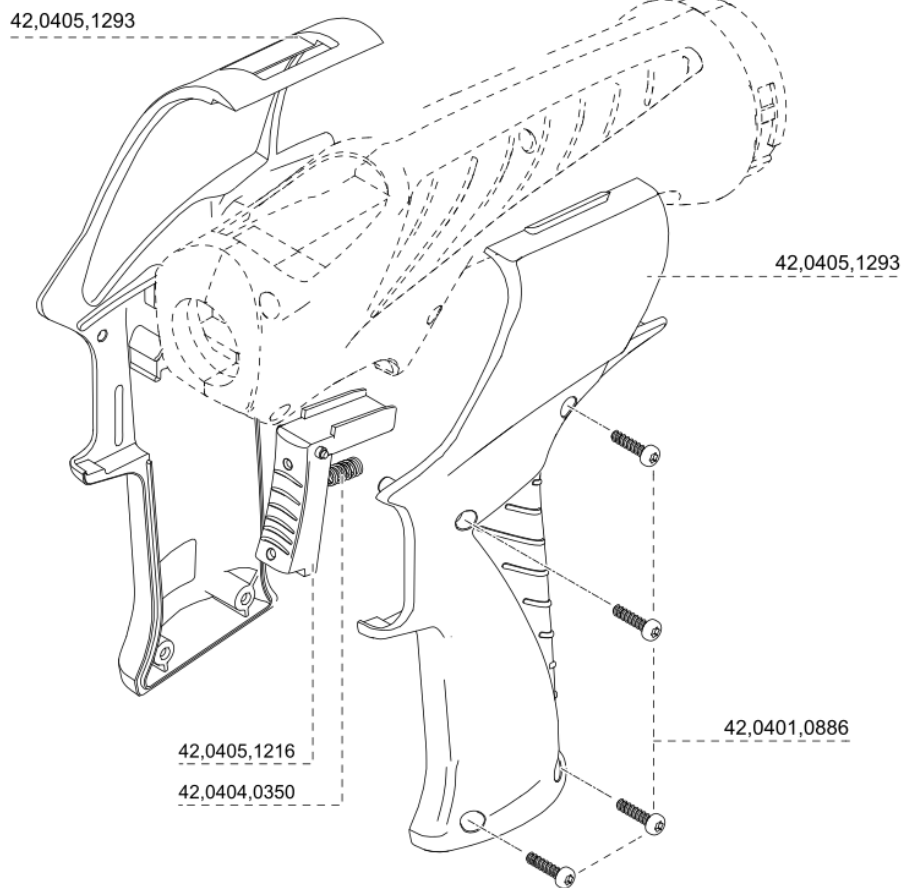
**DETAIL IF**

**UP/DOWN LED**

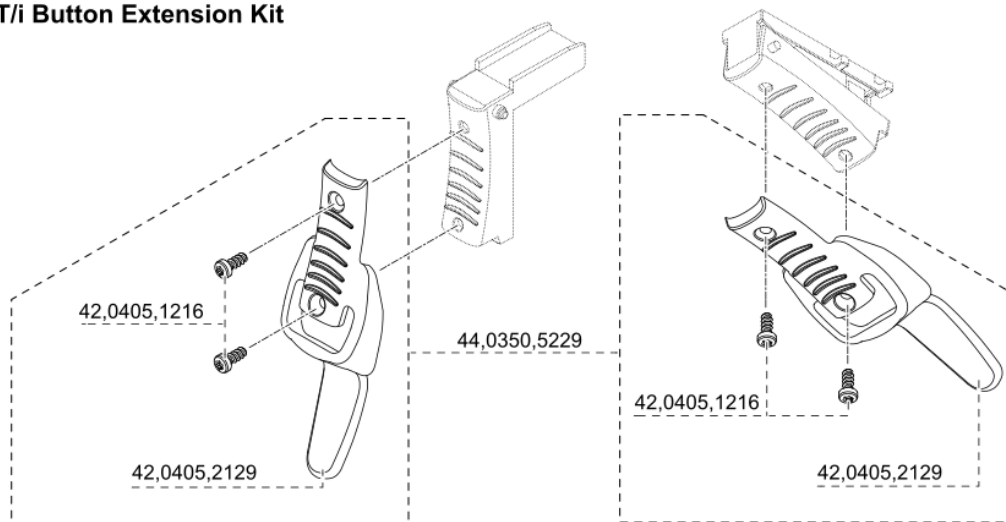


**OPT/i T-Handle for Push**

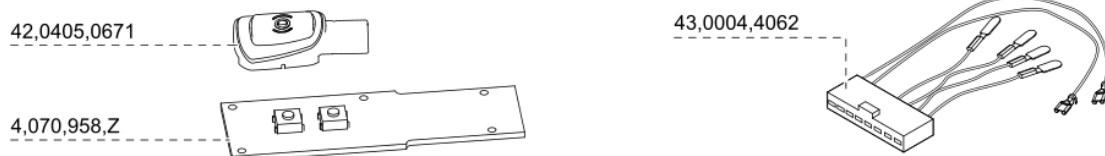
**44,0350,5298**



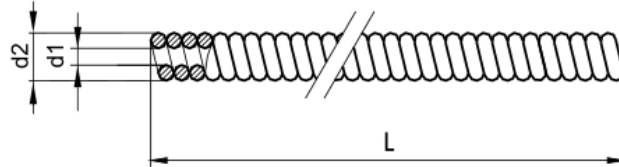
**OPT/i Button Extension Kit**



**Torch Trigger on the top**



**Tab. 3**



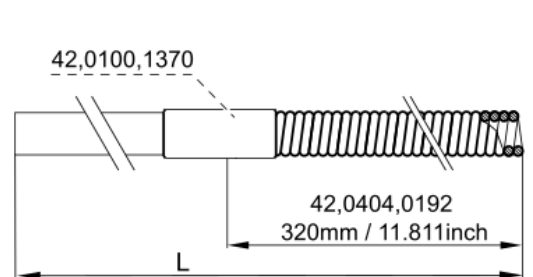
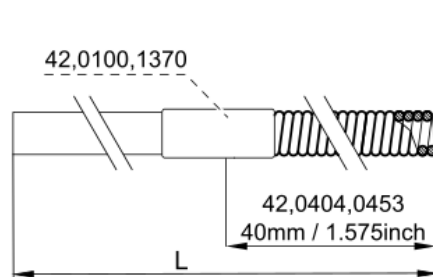
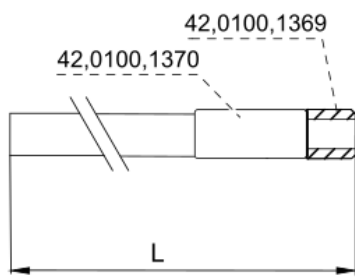
material	Ø		d1		d2		Part No. L		Part No. L		Part No. L	
	mm	inch	mm	inch	mm	inch	5m	16.4feet	15m	49.2feet	50m	160feet
Steel liner	0,8	.030	1,4	.055	4,4	.176	40,0002,0040,005		40,0002,0040,015		40,0002,0040,050	
Steel liner	0,9 - 1,0	.035/.040	1,6	.062	4,8	.189	40,0002,0041,005		40,0002,0041,015		40,0002,0041,050	
Steel liner	1,2	.045	1,9	.074	4,9	.192	40,0002,0042,005		40,0002,0042,015		40,0002,0042,050	
Steel liner	1,4 - 1,6	.052/.062	2,5	.098	4,9	.192	40,0002,0043,005		40,0002,0043,015		40,0002,0043,050	
CrNi liner	0,8	.030	1,4	.055	4,4	.176	40,0002,0044,005		40,0002,0044,015		40,0002,0044,050	
CrNi liner	0,9 - 1,0	.035/.040	1,6	.062	4,8	.189	40,0002,0045,005		40,0002,0045,015		40,0002,0045,050	
CrNi liner	1,2	.045	1,9	.074	4,9	.192	40,0002,0046,005		40,0002,0046,015		40,0002,0046,050	
CrNi liner	1,4 - 1,6	.052/.062	2,5	.098	4,9	.192	40,0002,0047,005		40,0002,0047,015		40,0002,0047,050	
Steel liner coated	0,8	.030	1,4	.055	4,4	.176	40,0002,0052,005		40,0002,0052,015		40,0002,0052,050	
Steel liner coated	0,9 - 1,0	.035/.040	1,6	.062	4,8	.189	40,0002,0053,005		40,0002,0053,015		40,0002,0053,050	
Steel liner coated	1,2	.045	1,9	.074	4,9	.192	40,0002,0054,005		40,0002,0054,015		40,0002,0054,050	
Steel liner coated	1,4 - 1,6	.052/.062	2,5	.098	4,9	.192	40,0002,0055,005		40,0002,0055,015		40,0002,0055,050	

**Tab. 3**

**combi liner W AL**

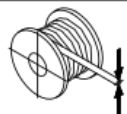
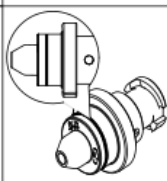
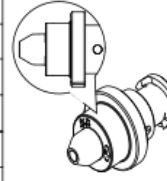

**combi liner G AL**

**combi inner liner G**

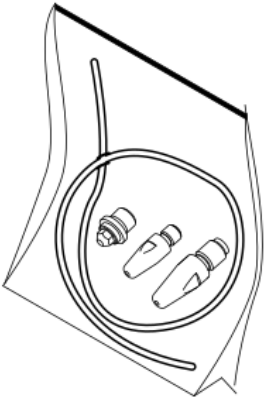


Ø mm	Ø inch	L		d1		d2		combi liner W AL	combi liner G AL	combi inner liner G
		m	feet	mm	inch	mm	inch	Part No.	Part No.	Part No.
0,8	.030	2,0	6.5	1,2	.059	4,7	.185	44,0350,3388	44,0350,3400	44,0350,5550
0,8	.030	3,8	12.4	1,2	.059	4,7	.185	44,0350,3392	44,0350,3404	44,0350,5513
0,8	.030	4,8	15.7	1,2	.059	4,7	.185	44,0350,3396	44,0350,3408	44,0350,5518
0,9 - 1,0	.035/.040	2,0	6.5	1,5	.062	4,7	.185	44,0350,3389	44,0350,3401	44,0350,5551
0,9 - 1,0	.035/.040	3,8	12.4	1,5	.062	4,7	.185	44,0350,3393	44,0350,3405	44,0350,5514
0,9 - 1,0	.035/.040	4,8	15.7	1,5	.062	4,7	.185	44,0350,3397	44,0350,3409	44,0350,5519
1,2	.045	2,0	6.5	1,8	0.74	4,7	.185	44,0350,3390	44,0350,3402	44,0350,5552
1,2	.045	3,8	12.4	1,8	0.74	4,7	.185	44,0350,3394	44,0350,3406	44,0350,5515
1,2	.045	4,8	15.7	1,8	0.74	4,7	.185	44,0350,3398	44,0350,3410	44,0350,5520
1,4 - 1,6	.052/.062	2,0	6.5	2,4	.098	4,7	.185	44,0350,3391	44,0350,3403	44,0350,5553
1,4 - 1,6	.052/.062	3,8	12.4	2,4	.098	4,7	.185	44,0350,3395	44,0350,3407	44,0350,5516
1,4 - 1,6	.052/.062	4,8	15.7	2,4	.098	4,7	.185	44,0350,3399	44,0350,3411	44,0350,5521
2,0	.045	2,0	6.5	1,2	.059	4,7	.185	44,0350,3615	44,0350,3618	44,0350,5554
2,0	.045	3,8	12.4	3,0	.118	4,7	.185	44,0350,3616	44,0350,3619	44,0350,5517
2,0	.045	4,8	15.7	3,0	.118	4,7	.185	44,0350,3617	44,0350,3620	44,0350,5522

**TAB. 4** clamping piece

		Fe / CrNi	Alu / CuSi	colour	
Ø mm	Ø inch				
0,8	.031		44,0350,3314	grey	
0,8	.031	44,0350,3315		grey	
0,9-1,0	.039	44,0350,3317		blue	
1,2	.047	44,0350,3318		red	
1,4-1,6	.062	44,0350,3320		black	
2,0	.078		44,0350,3321	green	
2,4	.095		44,0350,4245	brown	
2,0	.078	42,0001,4589			
2,4	.095				
2,8	.110				

**basic kits**

	Ø mm	Ø inch	m	feet	Fe MTG / MTW Part No.	CrNi MTG / MTW Part No.	Alu MTW Part No.	CuSi MTW Part No.	Alu/CuSi MTG Part No.
	0,6	.023	5,0	11.5	44,0350,5296	X	X	X	
0,8	.030	5,0	11.5	44,0350,5117	44,0350,5158	44,0350,5135	44,0350,5144		
0,9	.035	5,0	14.8	44,0350,5118	44,0350,5159	44,0350,5136	44,0350,5145		
1,0	.040	5,0	11.5	44,0350,5119	44,0350,5160	44,0350,5137	44,0350,5146		
1,2	.047	5,0	14.8	44,0350,5120	44,0350,5161	44,0350,5138	44,0350,5147		
1,4	.052	5,0	11.5	44,0350,5121	44,0350,5162	44,0350,5139	44,0350,5148		
1,6	.062	5,0	14.8	44,0350,5122	44,0350,5163	44,0350,5140	44,0350,5149		
2,0	.078	5,0	14.8	X	X	44,0350,5141	X		

## MHP 400i ML/G/FSC/UD/4.35m/LED (4,047,779)

Article no.	Description	Quantity	Unit
42,0402,0258	O-ring 4x1.2mm FKM	1	pc
42,0407,0100	CABLE FIXING 150	1	pc
42,0405,1318	Sliding ring handle mould W6	1	pc
44,0450,1436	Extract. tool CPC+35mm extens.	1	pc
42,0405,1293	Pistol grip TPSi Push	1	pc
44,0350,5298	OPT/i T-Handle SET for Push	1	pc
44,0350,3410	Combi liner G Al /1.2/4.8m	1	pc
44,0350,3403	Combi liner G Al /1.6/2.0m	1	pc
44,0350,3407	Combi liner G Al /1.6/3.8m	1	pc
44,0350,3411	Combi liner G Al /1.6/4.8m	1	pc
44,0350,3405	Combi liner G Al /1.0/3.8m	1	pc
44,0350,3409	Combi liner G Al /1.0/4.8m	1	pc
44,0350,3402	Combi liner G Al /1.2/2.0m	1	pc
44,0350,3406	Combi liner G Al 1.2/3.8m	1	pc
44,0350,3620	Combi liner G Al /2.0/4.8m	1	pc
44,0350,3619	Combi liner G Al /2.0/3.8m	1	pc
44,0350,3400	Combi liner G Al /0.8/2.0m	1	pc
44,0350,3404	Combi liner G Al /0.8/3.8m	1	pc
44,0350,3408	Combi liner G Al /0.8/4.8m	1	pc
44,0350,3401	Combi liner G Al /1.0/2.0m	1	pc
44,0350,5520	Combination liner G /1.2/4.8m	1	pc
44,0350,5516	Combination liner G /1.6/3.8m	1	pc
44,0350,5521	Combination liner G /1.6/4.8m	1	pc
44,0350,5514	Combination liner G /1.0/3.8m	1	pc
44,0350,5519	Combination liner G /1.0/4.8m	1	pc
44,0350,5515	Combination liner G /1.2/3.8m	1	pc
44,0350,5517	Combination liner G /2.0/3.8m	1	pc
44,0350,5513	Combination liner G /0.8/3.8m	1	pc
44,0350,5518	Combination liner G /0.8/4.8m	1	pc
42,0404,0453	Bronze liner 2.7x1.0x40mm	1	pc
42,0404,0192	Bronze inner liner 2,7x1 0,32m	1	pc
42,0100,1370	Connector uni. to liner	1	pc
42,0100,1369	Outlet part to liner MAG02	1	pc
44,0350,3392	Combi liner W Al /0.8/3.8m	1	pc

## MHP 400i ML/G/FSC/UD/4.35m/LED (4,047,779)

Article no.	Description	Quantity	Unit
44,0350,3396	Combi liner W Al /0.8/4.8m	1	pc
44,0350,3393	Combi liner W Al /1.0/3.8m	1	pc
44,0350,3397	Combi liner W Al /1.0/4.8m	1	pc
44,0350,3394	Combi liner W Al /1.2/3.8m	1	pc
44,0350,3398	Combi liner W Al /1.2/4.8m	1	pc
44,0350,3395	Combi liner W Al /1.6/3.8m	1	pc
44,0350,3399	Combi liner W Al /1.6/4.8m	1	pc
44,0350,3616	Combi liner W Al /2.0/3.8m	1	pc
44,0350,3617	Combi liner W Al /2.0/4.8m	1	pc
40,0002,0040,015	Steel liner exposed 0.8/15m	1	pc
40,0002,0041,015	Steel liner exposed 1.0 / 15m	1	pc
40,0002,0042,015	Steel liner exposed 1.2/15m	1	pc
40,0002,0043,015	Steel liner exposed 1.6/15m	1	pc
40,0002,0044,015	CrNi liner exposed 0.8/15m	1	pc
40,0002,0045,015	CrNi liner exposed 1.0/15m	1	pc
40,0002,0046,015	CrNi liner exposed 1.2/15m	1	pc
40,0002,0047,015	CrNi liner exposed 1.6/15m	1	pc
40,0002,0052,015	Steel inner liner C 0.8 / 15 m	1	pc
40,0002,0053,015	Steel inner liner C 1.0 / 15 m	1	pc
40,0002,0054,015	Steel inner liner C 1.2 / 15 m	1	pc
40,0002,0055,015	Steel inner liner C 1.6 / 15 m	1	pc
40,0002,0040,005	Steel liner exposed 0.8/5m	1	pc
40,0002,0041,005	Steel liner exposed 1.0/5m	1	pc
40,0002,0042,005	Steel liner exposed 1.2/5m	1	pc
40,0002,0043,005	Steel liner exposed 1.6/5m	1	pc
40,0002,0044,005	CrNi liner exposed 0.8/5m	1	pc
40,0002,0045,005	CrNi liner exposed 1.0/5m	1	pc
40,0002,0046,005	CrNi liner exposed 1.2/5m	1	pc
40,0002,0047,005	CrNi liner exposed 1.6/5m	1	pc
40,0002,0052,005	Steel inner liner C 0.8 / 5 m	1	pc
40,0002,0053,005	Steel inner liner C 1.0 / 5 m	1	pc
40,0002,0054,005	Steel inner liner C 1.2 / 5 m	1	pc
40,0002,0055,005	Steel inner liner C 1.6 / 5 m	1	pc
40,0002,0040,050	Steel liner exposed 0.8/50m	1	pc



## MHP 400i ML/G/FSC/UD/4.35m/LED (4,047,779)

Article no.	Description	Quantity	Unit
40,0002,0041,050	Steel liner exposed 1.0/50m	1	pc
40,0002,0042,050	Steel liner exposed 1.2/50m	1	pc
40,0002,0043,050	Steel liner exposed 1.6/50m	1	pc
40,0002,0044,050	CrNi liner exposed 0.8/50m	1	pc
40,0002,0045,050	CrNi liner exposed 1.0/50m	1	pc
40,0002,0046,050	CrNi liner exposed 1.2/50m	1	pc
40,0002,0047,050	CrNi liner exposed 1.6/50m	1	pc
40,0002,0052,050	Steel inner liner C 0.8 / 50 m	1	pc
40,0002,0053,050	Steel inner liner C 1.0 / 50 m	1	pc
40,0002,0054,050	Steel inner liner C 1.2 / 50 m	1	pc
40,0002,0055,050	Steel inner liner C 1.6 / 50 m	1	pc
44,0350,3388	Combi liner W Al /0.8/2.0m	1	pc
44,0350,3389	Combi liner W Al /1.0/2.0m	1	pc
44,0350,3390	Combi liner W Al /1.2/2.0m	1	pc
44,0350,3391	Combi liner W Al /1.6/2.0m	1	pc
44,0350,5550	Kombiseele G /0,8/2,0m	1	pc
44,0350,5552	Kombiseele G /1,2/2,0m	1	pc
44,0350,5553	Kombiseele G /1,6/2,0m	1	pc
44,0350,5522	Combination liner G /2.0/4.8m	1	pc
44,0350,5554	Kombiseele G /2,0/2,0m	1	pc
44,0350,3615	Combi liner W Al /2.0/2.0m	1	pc
44,0350,3618	Combi liner G Al /2.0/2.0m	1	pc
44,0350,5551	Kombiseele G /1,0/2,0m	1	pc
44,0350,3314	Clamping nipple 0.8 Al / CuSi	1	pc
44,0350,3315	Clamping piece 0.8 Fe / CrNi	1	pc
44,0350,3318	Clamping piece 1.2	1	pc
44,0350,3320	Clamping piece 1.4/1.6	1	pc
44,0350,3317	Clamping piece 0.9 / 1.0	1	pc
44,0350,3321	Clamping piece 2.0 Al	1	pc
42,0001,4589	Clamping piece 2.8 SSFCW	1	pc
44,0350,4245	Clamping piece 2.4 Al	1	pc
44,0350,5144	BK Al ø0.8 /G CuSi ø0.8 G/W/5m	1	pc
44,0350,5145	BK Al ø0.9 /G CuSi ø0.9 G/W/5m	1	pc
44,0350,5146	BK Al ø1.0 /G CuSi ø1.0 G/W/5m	1	pc

## MHP 400i ML/G/FSC/UD/4.35m/LED (4,047,779)

Article no.	Description	Quantity	Unit
44,0350,5147	BK Al ø1.2 /G CuSi ø1.2 G/W/5m	1	pc
44,0350,5148	BK Al ø1.4 /G CuSi ø1.4 G/W/5m	1	pc
44,0350,5149	BK Al ø1.6/G CuSi ø1.6 G/W/5m	1	pc
44,0350,5135	BK Al ø0.8 /W/5m	1	pc
44,0350,5136	BK Al ø0.9 /W/5m	1	pc
44,0350,5137	BK Al ø1.0 /W/5m	1	pc
44,0350,5138	BK Al ø1,2 W/5m MTW	1	pc
44,0350,5139	BK Al ø1.4 /W/5m	1	pc
44,0350,5140	BK Al ø1.6 /W/5m	1	pc
44,0350,5141	BK Al ø2.0 /W/5m	1	pc
44,0350,5163	BK CrNi ø1.6 /G/W/5m	1	pc
44,0350,5162	BK CrNi ø1.4 /G/W/5m	1	pc
44,0350,5160	BK CrNi ø1,0 G/W/5m MTG/MTW	1	pc
44,0350,5161	BK CrNi ø1,2 G/W/5m MTG/MTW	1	pc
44,0350,5159	BK CrNi ø0.9 /G/W/5m	1	pc
44,0350,5158	BK CrNi ø0.8 /G/W/5m	1	pc
44,0350,5296	BK Fe ø0,6 /G/W/5m	1	pc
44,0350,5117	BK Fe ø0.8 /G/W/5m	1	pc
44,0350,5118	BK Fe ø0.9 /G/W/5m	1	pc
44,0350,5119	BK Fe ø1,0 G/W/5m MTG/MTW Fe	1	pc
44,0350,5120	BK Fe ø1,2 /G/W/5m	1	pc
44,0350,5121	BK Fe ø1.4 /G/W/5m	1	pc
44,0350,5122	BK Fe ø1.6 /G/W/5m	1	pc